

THE SUITS WORLD

WORLD
MAGAZINE
FASHION EDITION

Let
the **STYLE**
DO THE
TALK

OUR FASHION
SUITSWEAR
NEVER FADES



Confessions

UNEDITED
UNPREDICTABLE
UNSTOPPABLE

NEVER UNDERSTIMATE THE POWER
OF LOOKING GOOD AND
ELEGANT

It can be difficult to articulate the power of style and fashion through words, but these icons managed to do so with quote-worthy, inspiring words of wisdom to live by. From the greatest fashion designers to legendary models and stylists, get inspired by today's fashion that will never go out of style. Fashion is part of the daily air and it changes all the time, with all the events. You can even see the approaching of a revolution in clothes. You can see and feel everything in clothes. Don't be into trends. Don't make fashion own you, but you decide what you are, what you want to express by the way you dress and the way to live. In the fast-paced and ever-changing world of fashion, one timeless aspect remains constant: style. Style is the thread that weaves through generations, transcending trends and leaving a lasting impression. From the deeper charm of a well-tailored streetstyle to the effortless flair of casual fit, a gentleman's style is a reflection of his character, attitude, and individuality. Integral to this ensemble are the perfect dress shoes, which not only complete the outfit but also showcase the wearer's attention to detail and commitment to looking his best.

**THE
Editor's
Letter**



**Our
Fashion
Lovers**

season of style: as we turn the page on another inspiring, I want to take a moment to express our deepest gratitude to you -- our loyal audience. Through shifting trends and bold reinventions, your unwavering support has been the true fabric of our journey. Thank you for standing with us, for celebrating creativity, and for continuing to champion the power of fashion to tell stories, spark change, and connect us all. Here's to the elegant of evolution-- and to many

table OF content

5

This vibrant suit from The Suit World is a celebration of bold beauty and unapologetic confidence. Tailored to accentuate while offering freedom of movement, it's the kind of power dressing that turns heads and owns rooms. The playful pop of color, paired with classic tailoring and sharp lapels, speaks of a woman who's not afraid to stand out. Styled with high-waisted trousers, a sleek top, a polished bun, and a radiant smile, this look merges sophistication with personality. It's more than a moment. Lime Green has never looked so fearless.

14

11

In this radiant look from The Suit's World, modern professionalism meets serene confidence. This navy blue suit is tailored with a soft structure, offering both polish and ease.

ts 20

n the ever-e
fashion, who
and go, cert
stand the te
dying both e
thority. Mad
on of conten
cently show

it's
l
fid-
curves
vement
g that

26 **hen tradition fuses with modern design, something truly iconic is born. Tytié, always ahead of the curve, delivers a standout fashion mome-**

ed with
els,
afraid
heels,
red lip,
on with
movem-
oked so

31200

Imagine rocking in this lime ladies suit wear.

THE SUIT'S WORLD



This vibrant suit from The Suit's World is a celebration of bold beauty and unapologetic confidence. Tailored to accentuate curves while offering freedom of movement it's the kind of power dressing that turns heads and owns rooms.

The playful pop of color, paired with classic tailoring and sharp lapels, speaks of a woman who's not afraid to stand out. Styled with high heels, a polished bun, and a radiant red lip, this look merges sophistication with personality. It's more than a movement . Lime Green has never looked so fearless.





Drenched in a commanding shade of royal grey, this ensemble by The Suit's World captures the essence of elegance and leadership. The structured silhouette accented with a white shirt, strikes the perfect balance between the two and corporate strength.

It's a look that says they're not just part of the conversation—they lead it. Paired with minimal jewelry and confidence, this suitwear turns any walkway into a runway.

Fifty Shades of Grey: A suit that speaks authority.

THE SUIT'S WORLD

Forget the ordinary this striking grey suit celebrates the evolution of couple's tailoring. With clean lines, polished detailing, and flawless fit, it's modern tribute to timeless style.

Ideal for couples who embrace boldness without sacrificing grace, this piece from The Suit's World proves that professional wear can be both fierce fashionable. A true wardrobe essential for the trendsetting trailblazer.

When classic meets contemporary, style speaks louder than words. This striking couple embodies effortless sophistication - she, in a sleek black dress that hugs with subtle drama, and he, in a sharp grey suit that defines refined masculinity. The contrast of textures and tones creates perfect harmony: her look is bold yet graceful, his, is polished with a modern edge. Together, they move like a statement - a walking portrait of timeless fashion, confidence, and undeniable chemistry.



Redefining elegance. Power in Blue.

THE SUIT'S WORLD

Bold, brilliant, and unapologetically sophisticated - this royal blue gent's suit from The Suit's World is the ultimate power move in modern fashion. Tailored to perfection, the double two piece blazer with gold button detailing brings a refined military edge, while the fitted trousers flatter with sharp precision. The vivid blue

hue radiates confidence, making it the perfect choice for gents who command both rooms and respect. Whether it's a high-stakes meeting or a stylish garden event, this suit is more than



an outfit - it's a statement. Power dressing just found its new definition. Sharp striking, and undeniably confident - this look is a masterclass in bold balance. The rich blue suit lays the foundation for classic elegance, while the vibrant red tie injects a burst of personality and power.

Grounded by tan formal shoes, the outfit achieves a refined contrast that's both eye-catching and tasteful. It's a style that bridges tradition with flair, perfect for the modern gentleman who knows that true sophistication lies in the details.

Whether at a wedding, boardroom, or upscale event, this ensemble speaks volumes without saying a word.

Smart dressing with a fresh twist. The tailored blue suit offers clean lines and a strong silhouette, while the red tie adds just the right pop of bold sophistication. Tan formal shoes complete the look with a warm, grounded touch, bringing the whole outfit into perfect harmony. It's a confident, well-balanced mix of color and class-ideal for the man who embraces tradition but isn't afraid to stand out. From formal affairs to stylish day events, this is statement dressing done right.





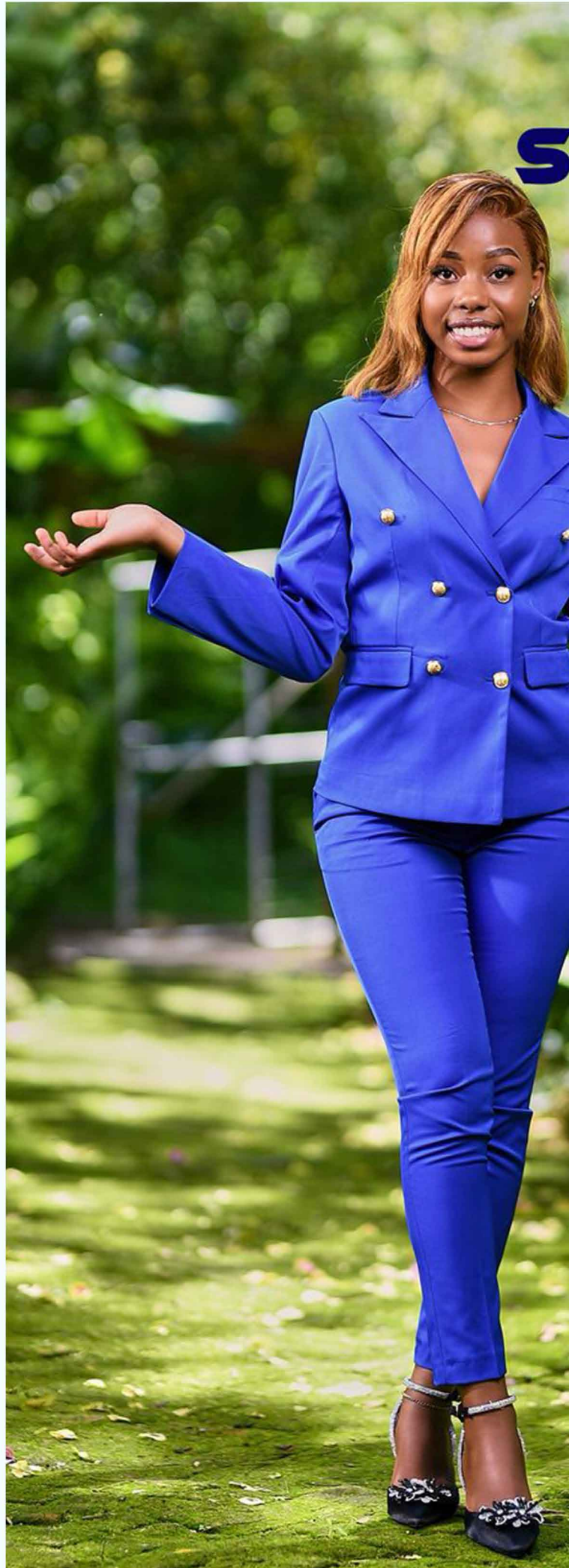
Effortless Elegance: A fresh take on Bl- ue suiting.

THE SUIT'S WORLD



In this radiant look from The Suit's World modern professionalism meets serene confidence. This navy blue suit is tailored with soft structure, offering both polish and ease - perfect for women who value comfort without compromising on style.

Paired with a simple black or cream inner top, the color contrast adds depth while keeping the look refined and approachable. The subtle sheen of the fabric, clean lapels, and well-fitted silhouette make it ideal for boardroom brilliance or outdoor sophistication. It's not just a suit - it's a celebration of self-assurance, joy, and contemporary class. This stunning light blue suit from The Suit's World strikes the perfect balance between boldness and grace.



THE SUITS WORLD

With its flattering cut and relaxed elegance, it embodies a new era of soft power dressing—where professionalism doesn't need to be rigid. Paired with a neutral top and natural curls, this look speaks of authenticity, confidence, and calm control. Whether stepping into a meeting or making an appearance at a daytime event, she owns the moment with quiet strength and stand-out style.



This beautifully tailored blue suit offers a fresh, uplifting take on traditional workwear. The calming color evokes clarity and confidence while the feminine fit and smooth fabric ensure all-day comfort. Styled with minimal accessories and a warm smile.

Urban flame: owning the city in designer suit.

THE SUIT'S WORLD



Commanding the concrete jungle with confidence, this vibrant designer suit is a bold declaration of fearless gents style. Styled effortlessly with a black tie, white milky shirt and straight black trouser bringing movement and presence, while the casually draped blazer adds that cool, off

-duty edge. This look is not just fashion - it's attitude. Whether he's headed to a rooftop brunch or striding through the city on his own terms, he radiates strength, style, and unapologetic boldness. Blue isn't just a color here - it's a statement. One that says: "I've arrived."

Style authority: Commanding presence in contrast

THE SUIT'S WORLD



This is not just a suit - it's a statement of dominance and distinction. With a bold green blazer set against the crispness of a white shirt and grounded by sharp green trousers, this look redefines contemporary masculinity.

It's the kind of outfit that doesn't follow trends - it sets them. The contrast is intentional, powerful, and polished creating a visual edge that's both modern and timeless.

Whether stepping into a high-stakes event or a spotlight moment, this ensemble says one thing loud and clear: confidence doesn't need color - it owns the room in contrast.

A green blazer may whisper subtlety, but when styled with a pristine white shirt and tailored green trousers, the result is a visual punch of high-end elegance.



He walks in-no flash, no noise, just presence. The green blazer catches the light like brushed ivory, soft against the crisp white of his shirt, sharp against the weight of jet-green trousers.

It's a quiet rebellion against the predictable, a choice that says refinement doesn't beg for attention - it commands it. Every line tailored, every shade intentional. This is elegance that ease, masculinity redefined not in volume but in detail,

He doesn't follow trends: he moves through them like a shadow with purpose. Cool, composed, unforgettable. This is how a modern classic is worn.





Shadhaya Knight:

**The new face of
monochrome
masculinity.**



In a fashion landscape often dominated by flamboyance, Shadhaya Knight emerges as a beacon of understated elegance. Donning a meticulously tailored grey suit paired with a sleek black shirt, he redefines modern masculinity with a minimalist yet impactful aesthetic.

The ensemble's piece de resistance is the subtle neck chain nestled beneath the shirt's collar - a nod to contemporary trends that blend classic tailoring with personal flair. This accessory choice adds a layer of depth to the outfit, suggesting a man who is both grounded in tradition and unafraid to embrace modernity.

Knight's choice of a grey suit over the conventional black introduces a refreshing neutrality, allowing the ensemble to stand out in its simplicity. The black shirt underneath provides a stark contrast, enhancing the suit's hue and drawing attention to the chain detail.

This look is more than just a fashion statement; it's a testament to the power of subtlety and the impact of thoughtful accessorizing. In an era where overstatement is commonplace, Shadhaya Knight's style serves as a reminder that sometimes, less truly is more.

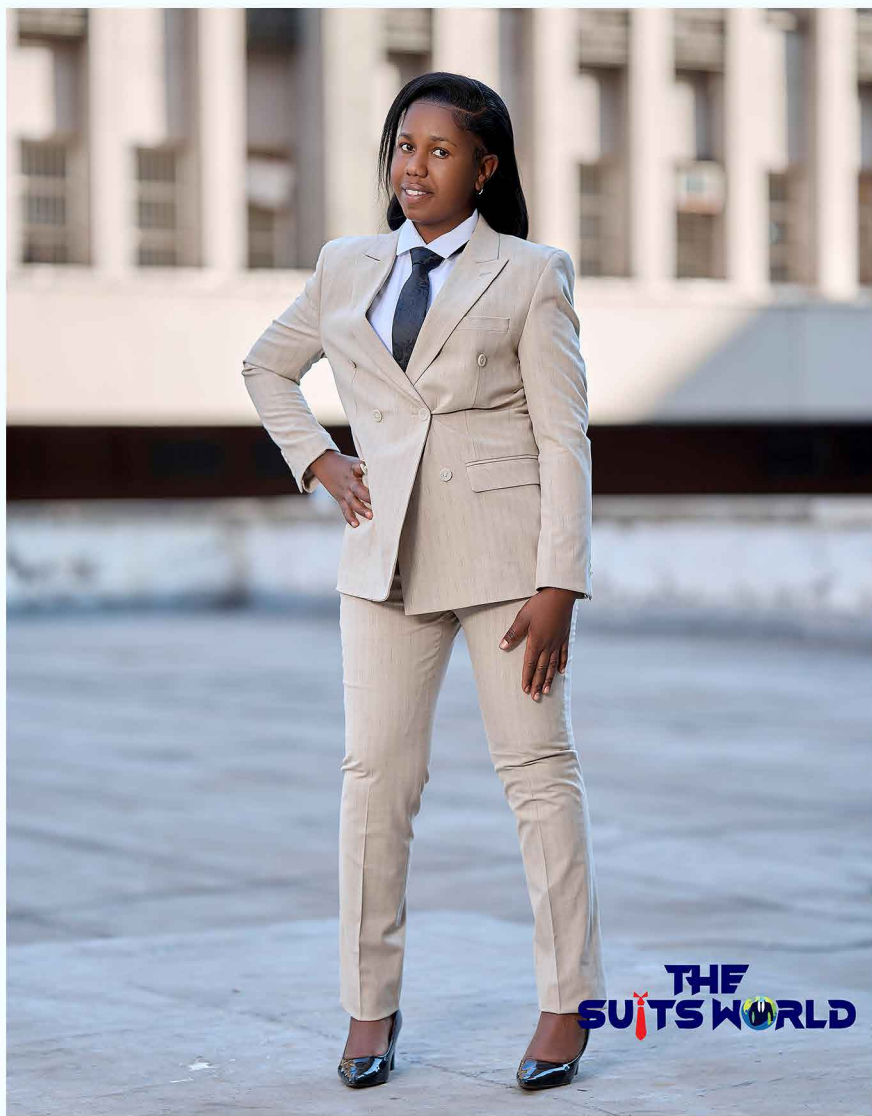




THE
SUITS  **WORLD**

She, in creamy: A vision of power dressing...

THE SUIT'S WORLD



The choice of cream - a hue that symbolizes serenity and trust-adds a refreshing twist to traditional power dressing. Complementing the suit, the crisp white shirt introduces a touch harmonious balance between boldness and subtlety.

Cream, often associated with clarity and inspiration, serves as a powerful statement in professional attire. When combined with the immaculate fit of the suit, it not only enhances the wearer's presence but also conveys a message of poised confidence. The ensemble's tailored structure ensures a flattering fit, emphasizing the importance of precision in fashion.

In the ever-evolving world of fashion, where trends come and go, certain ensembles stand the test of time. embodying both elegance and authority. A Boss, a beacon of contemporary style, recently showcased such an ensemble: a cream ladies' suit paired with a pristine whiteshirt. The creamy suit, tailored to perfection, accentuates a Boss's silhouette, exuding confidence and grace.





Young style icon: Confidence in a dark blue suit.

THE SUIT'S WORLD



In a world where style knows no age, this little gentleman proves that true fashion flair starts young. Dressed in a dark blue suit that mirrors the sophistication of adult tailoring, he strikes a confident pose - blazer casually slung over his shoulder, embodying charm and self-assurance far beyond his years.

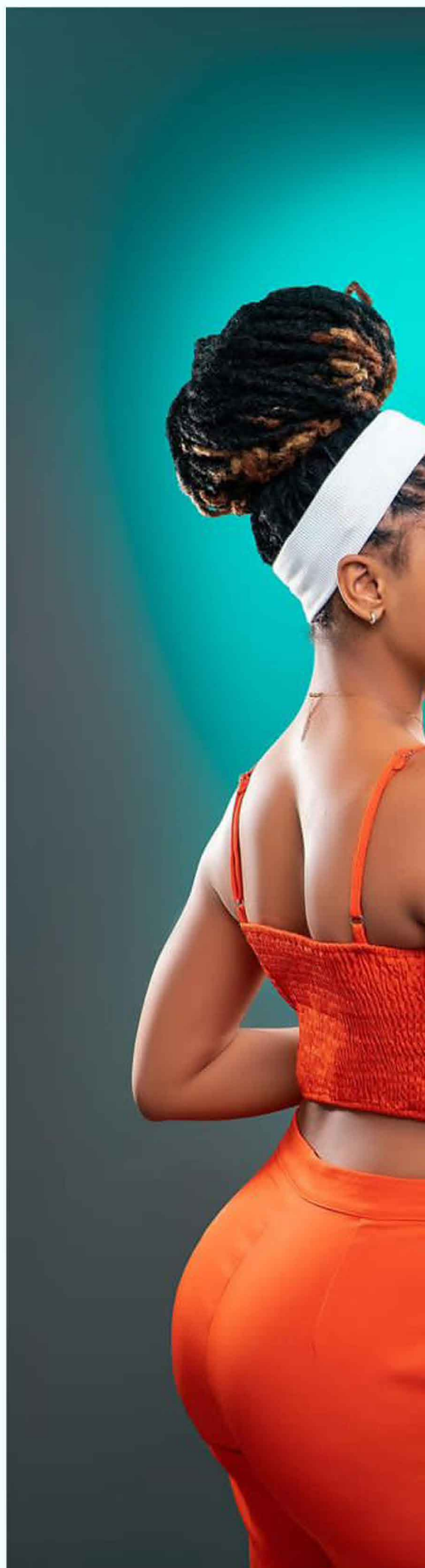


The deep navy hue of the suit reflects timeless elegance, while the perfect fit showcases a refined sense of detail. It's more than just an outfit; it's a miniature masterclass in classic menswear. The playful yet composed pose with the blazer off his back adds a splash of personality, turning a formal look into a statement of youthful cool.



Orange reign: The bold elegance of dressing in full color...

THE SUIT'S WORLD



Fashion is often defined by neutral palettes and understated tones, there comes a moment that stops us in our tracks - an unapologetic flash of color, confidence, and charisma. That moment is now, and it's owned entirely by a woman dressed head to toe in vibrant orange, effortlessly commanding attention as she poses with her blazer draped casually over one shoulder.

Orange is a color often reserved for the bold. It speaks of energy, confidence, and fearless expression. In this look, the vibrant hue does more than flatter the skin - it reflects the inner fire of a woman who knows her worth. It's powerful without being overpowering, playful yet polished.



The monochromatic styling allows for a striking visual impact, drawing the eye while still maintaining an elegant composure. The shade chosen—neither too loud nor too muted—walks the line between high fashion and everyday statement wear.

At the heart of the outfit is a beautifully tailored ensemble—an orange top paired with matching trousers that elongated the silhouette and enhance movement. The clean lines give structure, while the relaxed fit keeps it approachable and wearable. But what truly elevates the look is how she wears the blazer: not on her shoulders, but over them.

That one styling choice transforms the mood of the entire outfit. It turns a formal piece into an accessory of confidence. Draped effortlessly, the blazer becomes more than a layer—it becomes a symbol. She's not confined by the suit; she owns it. She's not dressing to meet expectations; she's setting them. Accessories are kept minimal, letting the orange speak for itself. Nude or metallic heels would anchor the look, while subtle gold jewelry might add a whisper of glam without stealing focus.

East meets edge: Tytie in a Designer- inspired, Japanese suit.



W

hen tradition fuses with modern design, something truly iconic is born. Tytie, always ahead of the curve, delivers a standout fashion moment in a designer Japanese suit lookalike - one that balances cultural homage with contemporary sharpness.

With its bold black sleeves and collar contrasting against a structured, minimalistic base, this ensemble is more than clothing - it's a story stitched in style. This fashion is revered for its attention to detail, clean lines, and meaningful simplicity. Tytie's suit draws from that heritage, echoing the elegant structure of traditional Japanese tailoring while infusing it with mode-

rn-day flair. The silhouette is intentional: sharp shoulders clean seems, and a strong yet refined presence. The choice of a black collar and sleeves edge, and a touch of rebellion - honoring the past while breaking boundaries.

The blazer with its structured form and kimono-like influence, commands attention without excess. It frames the body with precision, creating a bold outline that's powerful yet fluid. The black accents serve as visual anchors, drawing the eye and reinforcing a theme of controlled contrast - a signature element in Japanese - inspired fashion.

What makes Tytie's look unforgettable is the balance of tradition and individuality. While the suit respects the discipline of Japanese design like - minimalism, proportion, and restraint - it's also undeniably unique. The use of dual tones gives it a layered complexity, and Tytie's natural charisma brings the look to life.



Underneath the jacket, a sleek black shirt or subtle innerwear keeps the focus on the suit's bold geometry. Trousers follow suit, likely tapered or wide-legged with clean hems, allowing the entire outfit to flow as one cohesive statement. Accessories are kept minimal, in line with Japanese aesthetic principles-perhaps a single ring, a subtle chain, or sleek shoes to ground the look. The suit isn't just fashion-forward it carries cultural weight. By wearing a Japanese-inspired designer look.



Suits & Sparkle: Effortlessly redefining glamo dinner table.



Five ladies cur at the

In a scene that could rival the pages of any high-fashion editorial five impeccably dressed women gather around a dinner table -laughter bubbling, glasses clinking, and tailored elegance shining under soft ambient light. Each adorned in a stunning suit, they are the picture of modern sophistication, proving that femininity and power dressing are no longer separate worlds, but beautifully intertwined.

It is not just dinner, it's a celebration of self-expression. Each suit tells its own story. From bold colors to soft neutrals, structured blazers to fluid wide-leg trousers, the ensembles is a masterclass in how modern women wear strength - with style and ease.

The first lady commands attention in a fiery blue suit, symbolizing passion and bold leadership. Her blazer is sharply cut, hugging her silhouette with precision, while a plunging neckline adds just the right amount of edge. She pairs it with white accessories that catch the candlelight, mirroring her vibrant spirit.



Next to her, a woman in a colorful dark blue suit radiates quiet luxury. The plush texture adds depth and richness, while the fitted trousers and black heels complete a look that is as regal as it is effortless. She's the calm in the room—graceful, grounded, and glamorous.

Opposite her, another lady exudes minimal chic in an all-white suit. Crisp, clean, and elevated by a silk camisole underneath, her look is understated yet striking. Paired with silver jewelry and a sleek ponytail, she brings a breath of fresh elegance to the setting. Beside her, a woman makes a bold monochromatic statement in an electric blue pantsuit. Her blazer is oversized, casually draped over her shoulders,

paired with a matching bralette and tailored trousers. She's the trendsetter of the group—fearless, fashion-forward, and unapologetically herself. Completing the circle is a lady in a classic black double-breasted suit, reimagined with satin lapels and flared trousers. Her red lip and sparkling clutch bring drama to the timeless palette. She's the anchor—polished, poised, and always ahead of the curve.

There's a certain magic in watching these women—each so different, yet united by strength and sisterhood. Their suits don't overshadow their femininity; they enhance it. The laughter shared, the toasts raised, the eye contact that says "we see each other"—it's fashion in its most alive form.

Showcasin' the fashion trends we have.

THE SUIT'S WORLD



There's timeless elegance in a well-cut designer suit, and this look captures it flawlessly. Dressed in a black shirt, sleek cream trousers, and a sharp black tie, this gentleman exudes quiet confidence and refined style.



Green and Floral Layers.

She steps out, turning heads with every stride-not with loud fashion statements, but with the quiet confidence that only timeless style can bring.

The heart of the Look, Greens on.



Its tone deep and earthy, symbolizing growth balance, and elegance. Whether it's a sleek bodycon silhouette or a flowing A-line, the blazer hugs his frame with a soft strength. It's a piece that speaks softly.



Midnight Mode; The power of Black.



Sleek, sharp, and effortlessly cool - a man in an all-black suit paired with dark shades is the embodiment of modern edge and timeless confidence.

Blue Royalty. Bold elegance.



Dressed head to toe in an all-blue suit, she enters the room like a wave of confidence and calm. The rich hue-whether electric, navy, or sky-commands attention without overwhelming, offering a perfect blend of power and poise.

Blue Royalty. Bold elegance.



The structured blazer paired with tailored trousers frames his silhouette beautifully, while subtle styling keeps the focus on the suit's statement. It's sharp, sophisticated, and refreshingly bold - proof that blue isn't for the weak, and a well-fitted suit is a man's strongest armor



A young man and woman are standing side-by-side in a professional office environment. The man, on the left, is wearing a dark navy blue suit jacket over a white collared shirt and a dark tie with a subtle floral pattern. He has a slight smile and is looking towards the camera. The woman, on the right, is wearing a dark blue blazer over a light-colored top. She has her hair styled in long, thin braids and is wearing glasses. She has a neutral expression and is looking directly at the camera. The background is a light-colored wall with two framed pictures hanging on it. The overall lighting is soft and professional.

THE
SUITSWORLD

In The
world
of **fashion**

Ultimate Mindblowing Fashion Event senses.

THE SUIT'S WORLD



In a sea of navy and black, the *brown suit* stands out with quiet confidence and refined charm. When a man steps out in a well-tailored brown suit, he's not just dressed - he's making a statement of warmth, style, and individuality.

The beauty of the brown suit lies in its versatility. Whether it's a rich chocolate tone, warm caramel, or a soft mocha, the color brings depth and a natural sophistication that complements every skin tone. Paired with a crisp white shirt, light pastel, or even a bold patterned tie, the brown suit effortlessly adapts to both modern and classic styles.

Perfect for daytime events, outdoor weddings, or stylish office wear, this look blends tradition with a relaxed edge. It suggests a man who values timeless pieces but isn't afraid to add a unique twist to his wardrobe.



Graduation day is a moment of pride, achievement, and celebration – and what better way to mark such a milestone than with standout style? One graduate turned heads and captured hearts by stepping out in a **striking turquoise blazer**, paired effortlessly with **sleek black trousers** and the classic **black graduation cap**.



**THE
SUITS WORLD**



Weddings are known for love, joy, and timeless memories—but at this celebration, fashion took center stage too. A well-dressed group of guests arrived in stunning suits that turned heads.

When music and fashion collide, magic happens – and *Freeman*, the Zimdancehall star, proved exactly that as he stepped on stage clad in a *sleek grey suit* that echoed both class and charisma. As the lights hit, his look wasn't just performance-ready; it was a statement of elegance in motion.



TECHNICAL
MEDIA 



Family in Fashion: The Musekaz make a Statement in Stylish Suitwear.

THE SUIT'S WORLD

Secret Behind Polished shoes and accessories

THE SUIT'S WORLD



Jonathan D's footwear line has become emblematic of its commitment to merging tradition with modernity. The Suit's World offers a diverse range of shoes, from classic loafers and brogues to contemporary sneakers and sandals, catering to various style preferences. Notably, the *black and white nubuck shoes* have emerged as a fashion staple among men and women, celebrated for their versatility and sleek design.

In the ever-evolving world of fashion, certain styles withstand trends and seasons - and the white and black shoe is one of them. Striking the perfect balance between elegance and edge, this timeless footwear choice is making waves once again in both casual and formal circles. With crisp color blocking, the white and black combination speaks volumes.





In the realm of fashion, it's often the smallest details that make the strongest impact - and the *brown belt* is a quiet yet essential hero of any well-composed outfit. Rich in versatility and classic appeal, this staple accessory bridges the gap between functionality and refined style.

From deep chocolate tones to warm cognac shades, the brown belt offers a natural, earthy elegance that complements a wide range of colors and textures. Worn with jeans, chinos, or dress trousers, it adds structure and polish without overpowering the look. Whether crafted from smooth leather, suede, or woven materials, a quality brown belt is more than just a waist cincher - it's a signal of thoughtful dressing. Pair it with matching shoes for a cohesive finish, or contrast it subtly to add depth to a minimalist outfit.

In both casual and formal wear, the brown belt remains a timeless essential - .



In a world where fashion often leans toward minimalism, the *dark reddish formal hat with a verandah* brim steps in as a bold declaration of timeless style and confident individuality. Rich in color and character, this hat redefines formal headwear with a touch of vintage glamour and modern charm. The deep, wine-toned red adds a luxurious feel - not too loud, yet impossible to ignore.

THE SUITS WORLD



All rights reserved - no part of this magazine from "The Suit's World" may be reproduced in any form without our permission in writing from The Suit's World, except by a reviewer who wishes to quote brief passages in connection with a review written for inclusion in magazine or newspaper.

Thank You

THE SUIT'S WORLD